



TONE WINNER



AD-1PRE+ User Manual

ISO9001 Certified Enterprise



TONE WINNER

Product packing list

Number	Item	Quantity
1	Manual	1 piece
2	Power cord	1 piece
3	Optical Cable	1 piece
4	Data Cable	1 piece
5	Certificate	1 piece
6	Remote Control	1 piece

Pollution control labels and its content descriptions



This symbol indicates the product can be recyclable. The number 10 indicates the period of environmental protection. As long as you follow the safety and precautions related to this product, it will not cause environmental pollution or impact on human property within 10 years from the date of manufacture.

Name and content of toxic or hazardous substances or elements in the product

Part Name	Hazardous substances or elements					
	Lead (Pb)	Mercury (Hg)	Cadmium (Cd)	Hexavalent chromium (Cr) ⁶⁺	Polybrominated (PBB)	Biphenyls polyphenyls (PBDE)
Chassis enclosure	○	○	○	○	○	○
Electrical parts	×	○	○	○	○	○
Plastic structural parts	○	○	○	○	○	○
Metal structural parts	○	○	○	×	○	○
Cables	○	○	○	○	○	○
Transformer	○	○	○	○	○	○

Marks:

“○” means the content of the hazardous toxic substance is lower than SJ/T11363-2006 standard required.

“×” means in a homogeneous material of the component, the content of the hazardous toxic substance is higher than SJ/T11363-2006 standard required.

Note: “×” as there are no substitutable substances under the existing technology

Thank you for choosing Tonewinner brand audio products. We will serve you with "High technology, High quality and High taste" enterprise philosophy, will serve you with exquisite craft, classical circuit, high technologies, first-class quality and first-class services. We will bring all customers with our stable, reliable, durable and pleasant technology achievements!

Contents:

- 1. Important Protective Measures 2
- 2. Remark 3
- 3. Functions Overview 3
- 4. Features Overview 4
- 5. Front Panel 5
- 6. Rear Panel 5-6
- 7. Remote Control 6-7
- 8. Specification 8

Important protective measures for attention

	WARNING ELECTRIC DANGER DO NOT OPEN		<ul style="list-style-type: none">■ To reduce risk of electric shock, do not remove the outer cover (or back panel).■ For maintenance, it should be carried out by qualified maintenance people.■ To avoid fire and electric shock hazards, do not get the unit wet or damp.■ Safety protection category: Class II
---	---	---	---

1. Read the protective measures: read all warning messages about protection and operation in the instructions carefully before using the equipment.

2. Follow instructions: please follow the instructions and do not violate the instructions.

3. Place the product on where manufacturer recommends: to protect equipments overturning, do not use force to push or suddenly stop when moving.

4. Keep away from water and moisture: do not place equipment near water such as bathtub, basin, sink, washing machine, etc. Do not use equipment at high temperatures high humidity environment, such as a damp basement.

5. Cleaning: Do not use liquid or mist cleaners, please use dry cloth to clean. Turn off the machine and power off before clean the equipment.

6. Power supply: use the power supply according to indication. Should have reasonable wirings, to avoid damage, do no step. Pay special attention to power plugs, receptacles and connection wirings.

7. Ventilation: the chassis of equipment is designed with venting holes. To ensure reliable performance, please avoid overheating, do not cover the equipment. Do not use the equipment on beds, sofas, carpets etc. Newspapers, tablecloths, curtains, and other objects may block

venting holes. Do not put the equipment close to window curtains. If it is built-in installation, such as bookcase or rack, make sure enough venting. Keep a distance of 10cm (4") on left, right, top and rear sides. Equipment bracket or rear of top cover should have a distance of 10 cm (4 ") to rear panel or the wall, to keep venting space.

8. Heat - to keep products away from heat sources, such as heatsinks, stoves, objects that generate heat (including power amplifiers)

9. Prevent unknown objects or liquids - objects or liquids should be prevented from falling through the holes into the equipment, because it might contact current or live parts that might cause fire or electric shock. Do not place the equipment in rain or water splashing place, do not put into water containers, such as vases.

10. Please connect well all input/output wires before power on.

11. Thunder and lightning: unplug the power cable in thunder and lightning weather, it can effectively prevent lightning impulses to protect the equipment.

12. Protections:①unplug the power supply when you do not use the manual for long period. Plug. ②Good grounding can prevent the machine from being damaged.

Remark:

1. Please read this manual carefully before use.
2. The company reserves the right to interpret the manual.
3. Product appearance, color and pattern are subject to the actual product.
4. Please keep it together with the invoice after reading.
5. In case of product technology or software upgrade, the technology or firmware may be updated without further notice.

Function Overview:

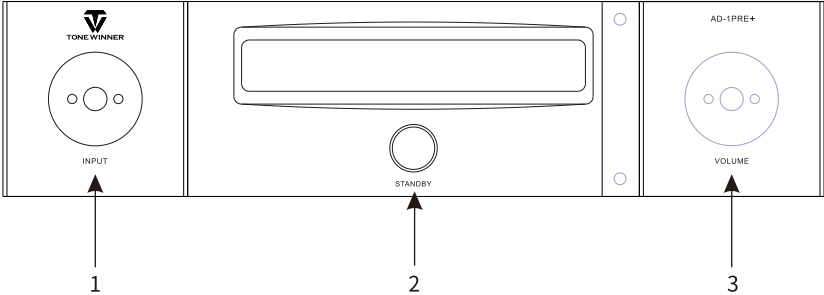
AD-1PRE+ is the latest flagship HI-END music decoding preamplifier developed by Tonewinner.

1. 3 ways analog audio input ports: 2 ways unbalanced input (AUX.CD), 1 way balanced input.
2. 2 ways phono input ports: 1 way moving coil input (MC), 1 way moving magnet input (MM).
3. 5 ways digital audio input ports: OPT1, OPT2, COAX1, COAX2, & USB.
4. Analog output ports: 2 ways unbalanced outputs and 1 way balanced output.

Features Overview:

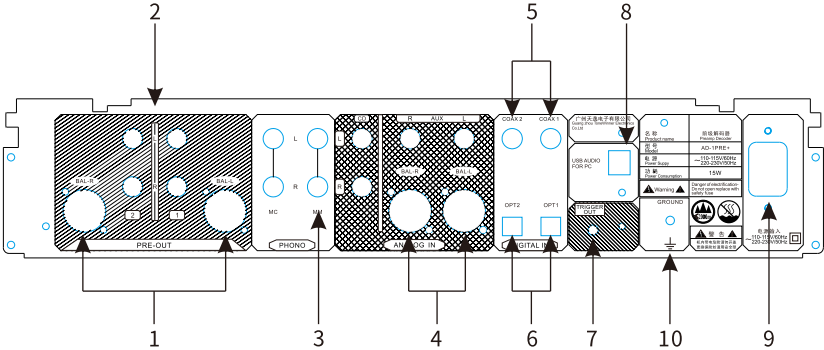
1. The digital receiving chip adopts CS8416 with excellent performance.
2. The DAC chip adopts ES9038Q2M from the ESS company in the United States which is highly regarded in the industry. The DAC's performance is extremely excellent, the signal-to-noise ratio is as high as 129dB, and the distortion is as low as -120dB.
3. The I/V switch circuit op amp adopts TI's top level fully differential op amp OPA1632, which maximizes the high-fidelity performance of the balanced transmission signal.
4. The electronic volume chip adopts JRC's top level chip MUSES72323, and specifications such as distortion, signal-to-noise ratio and separation are extremely excellent.
5. The balanced to unbalanced circuit op amp adopts TI's top bipolar op amp OPA1612, the distortion is as low as 0.000015%, and the noise density is as low as $1.1\text{nv}\sqrt{\text{Hz}}$.
6. Applies a specially designed audiophile analog power supply to make the sound quality more warm and mellow.
7. The exterior of the whole machine adopts all-aluminum alloy anodic oxidation drawing process, which is exquisite and dignified in workmanship.
8. Applies independent chambers design to control the mutual interference among the components.
9. Support many kinds of audio formats:
USB: DSD64-DSD512, DOP64, DOP128, DOP256.
COAX/OPT: PCM44.1-192, DOP64.
Smart phone: With OTG adapter, it can recognise the audio source from phone.

Front Panel:



- (1) INPUT: Input selection knob, input source sequences are as below:
 OPT1(optical input 1)->OPT2(optical input 2)->USB(USB audio input)->CD
 (CD audio input)->AUX(AUX audio input)->PH_MM(phono MM input)->XLR
 (balanced input)->COAX1 (coaxial input 1)->COAX2 (coaxial input 2).
- (2)STANDBY: Work and standby buttons and indicator, blue indicates working
 red indicates standby.
- (3) VOLUME : Volume adjustment knob.

Rear Panel:



- (1) Balanced XLR output port.
- (2) Unbalanced RCA output port: 2 ways.

- (3) 2 way phono input ports: 1 way moving coil (MC) input, 1 way moving magnet (MM) input, please distinguish them when connecting the cables pay attention to grounding and distinguish between MM and MC.
- (4) Balanced input: XLR input. Unbalanced input: AUX, CD.
- (5) 2 coaxial inputs: COAX1, COAX2 input.
- (6) 2 optical fiber inputs: OPT1, OPT2 input.
- (7) TRIGGER: Trigger output port (12V).
- (8) USB AUDIO FOR PC: USB audio source input, connect to computer or mobile phone via USB cable, & play audio from it.
- (9) AC input.
- (10) Phono ground terminal.

Remote Introduction :

The remote control is divided into four areas: ① option area, ② analog input, ③ digital input and ④ volume.

The silk screen and function introduction of the remote control are as shown in the figure:

Options area:

[⏻]: Power switch key: Press this key to turn on the power from standby state.

[DIM]: Adjust the brightness of the machine display.

[MUTE]: Mute button.

Analog input:

[CD]: Select the current input audio source as CD input.

[MM/MC]: The current input source selection is MM or MC.

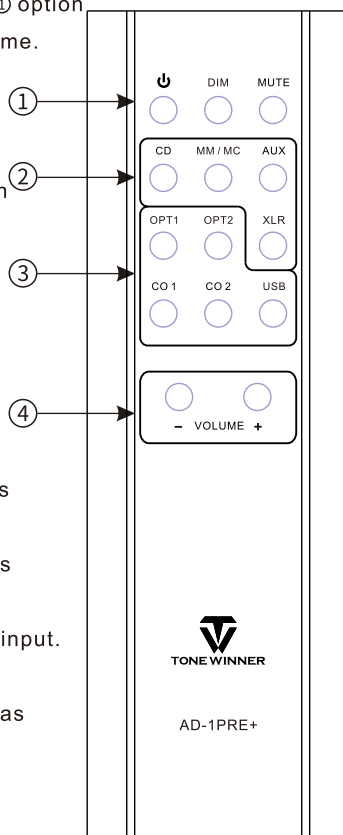
[AUX]: Select the current input audio source as AUX input.

[XLR]: Select the current input source as XLR input.

Digital input:

[OPT1]: Select the current input audio source as the OPT1 input.

[OPT2]: Select the current input source as the OPT2 input.



[CO1]: Select the current input source as COAX1 input.

[CO2]: Select the current input source as COAX2 input.

[USB]: Select the current input source as USB input.

Volume:

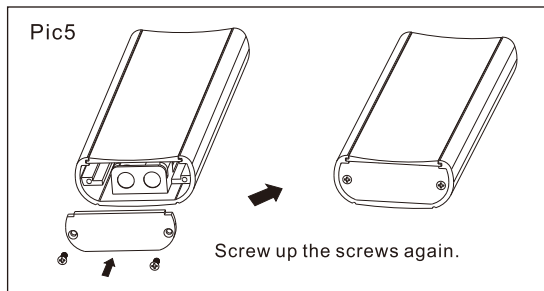
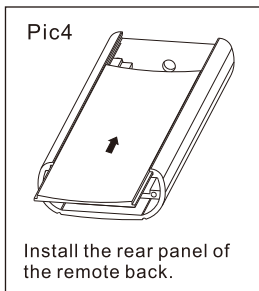
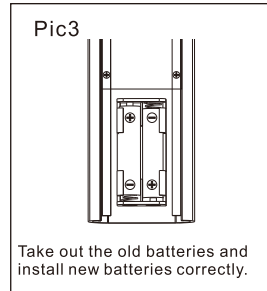
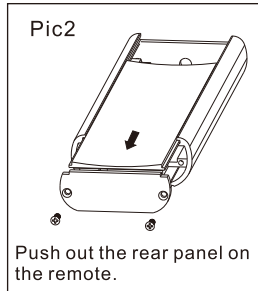
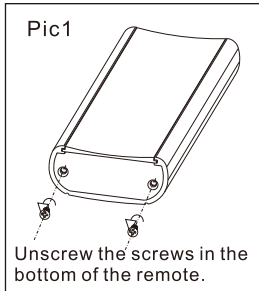
[VOLUME-]: Turn down the volume.

[VOLUME+]: Turn up the volume.

Notes:

1. When installing the battery into the remote, please make sure the batteries are installed correctly.
2. Please don't mix use old & new batteries in the remote.
3. If you didn't need to use the remote for a long time, please take out the batteries.
4. If the receiving distance of the remote is becoming shorter or instable please replace the batteries.
5. Please use soft cloth to clear the IR diode on the remote and the IR receiving window on the machine regularly.
6. Please don't put the remote in a moist and sultry place and avoid shock and vibration.

Remote battery replacement:



Specifications:

1. Crosstalk (fundamental wave): $\geq 102\text{dB}$ (1KHz)
2. Frequency response: 20Hz~180KHz (+1/-3dB)
3. SNR: ≥ 110 (A weighted)
4. THD: $\leq 0.0035\%$ (1KHz)
5. N.W: 9.7KG
6. G.W: 12.6KGS
7. Power consumption: 15W
8. Cabinet dimensions: 444×88 ×390mm
(Not include feet, knobs/buttons & rear binding posts)
9. Complete machine: 444×106×424mm
10. demendions: 597×532×168mm
11. Package dimensions: GB8898-2011, GB/T13837-2012, GB17625.1-2012



Scan QR code

Guangzhou Tonewinner Electronics Co., Ltd

Tel: 86-20-34797660/34796146

Web: <http://www.tonewinner.com>

Add: No.1, Hongsheng 3

Road, Dashi, Panyu, Guangzhou, 511430, China